

1012-5732...0300,1012(XC) SERIES VERTICAL MILLING HEAD

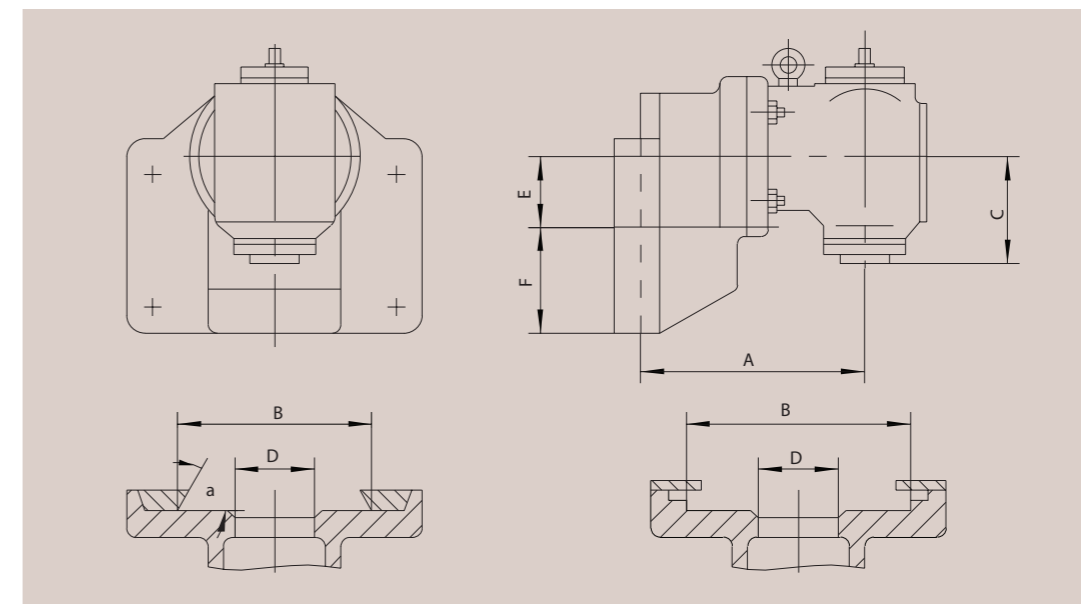


The series vertical milling head have a upright rotary plane.It is mostly used in vertical milling machine to perform the milling operation for planes,,edges and flutes on all kinds of angles.It has rigid spindle and high great transferring power,and an important accessory for expanding area of horizontal down-up milling machine.

Main specifications

Items Model	Taper of s pindle bore	Rotating angles	Matched type with milling machine	Name of milling machine maker	Ratio with milling machine	Taper with spindle of milling machine
1012-5732 (XC57-32B)	7:24(ϕ 44.45)	360°	X57-3		1: 1.5	MT3
1012-1602 (XC602B)	7:24(ϕ 44.45)	360°	X60 X60W		1: 1	7:24(ϕ 44.45)
1012-1612 (XC612B)	7:24(ϕ 44.45)	360°	X61 X61W X6130A		1: 1	7:24(ϕ 44.45)
1012-3612 (XC612C)	7:24(ϕ 44.45)	360°	X6130 X6130A		1: 1	7:24(ϕ 44.45)
1012-2622 (XC622B)	7:24(ϕ 44.45)	360°	X62 X62W X6132		1: 1	7:24(ϕ 69.85)
1012-3622 (XC622C)	7:24(ϕ 44.45)	360°	X6132A		1: 1	7:24(ϕ 69.85)
1012-2632 (XC632B)	7:24(ϕ 44.45)	360°	X63 X63WB 400W		1: 1	7:24(ϕ 69.85)
1012-3632 (XC632C)	7:24(ϕ 44.45)	360°	X6040 X6140		1: 1	7:24(ϕ 69.85)
1012-4632 (XC632B)	7:24(ϕ 44.45)	360°	X63T X63WT		1: 1	7:24(ϕ 69.85)
1012-5632 (XC632BZ)	7:24(ϕ 69.85)	360°	X63 X63WB 400W		1: 1	7:24(ϕ 69.85)
1012-6632 (XC632CZ)	7:24(ϕ 69.85)	360°	X6040 X6140		1: 1	7:24(ϕ 69.85)
1012-0642 (XC642CZ)	7:24(ϕ 69.85)	360°	FX6045 FX6145		1: 1	7:24(ϕ 69.85)
1012-0425 (C3150*425L)	7:24(ϕ 69.85)	360°	X6142		1: 1	7:24(ϕ 69.85)
1012-0400 (C3150*400L-1A)	7:24(ϕ 69.85)	360°	X6140A		1: 1	7:24(ϕ 69.85)
1012-0300 (C3150*300L-1A)	7:24(ϕ 44.45)	360°	X6130T		1: 1	7:24(ϕ 69.85)

1012-5732...0300,1012(XC) Inatallation sketch and dimensions



1012-5732...0300,1012(XC) Dimensional sketch

Items Model	A	B	c	D	E	F	a	GW kg	Case dimensions mm
1012-5732 (XC57-32B)	255	192	137	ϕ 134	133	75	60°	76	430X410X415
1012-1602 (XC602B)	265	250	137	ϕ 152	95	102	55°	82	440X435X405
1012-1612 (XC612B)	254	280	137	ϕ 190	110	102	50°	84	430X465X420
1012-3612 (XC612C)	254	300	137	ϕ 130	120	102	90°	88	440X480X420
1012-2622 (XC622B)	360	320	155	ϕ 165	130	112	55°	150	575X520X475
1012-3622 (XC622C)	360	340	155	ϕ 170	130	112	90°	155	575X530X475
1012-2632 (XC632B)	370	400	155	ϕ 165	130	112	55°	158	585X600X475
1012-3632 (XC632C)	370	400	155	ϕ 170	130	112	90°	168	595X605X475
1012-4632 (XC632B)	370	360	155	ϕ 210	130	112	50°	160	585X575X475
1012-5632 (XC632BZ)	400	400	170	ϕ 165	150	112	55°	234	635X600X545
1012-6632 (XC632CZ)	400	400	170	ϕ 170	150	112	90°	244	640X600X545
1012-0642 (XC642CZ)	470	500	170	ϕ 260	160	112	90°	274	710X700X555
1012-0425 (C3150*425L)	400	350	183	ϕ 210	150	112	90°	240	630X565X545
1012-0400 (C3150*400L-1A)	400	420	170	ϕ 218	150	112	90°	246	640X625X545
1012-0300 (C3150*300L-1A)	254	300	137	ϕ 168	110	102	90°	88	440X480X420