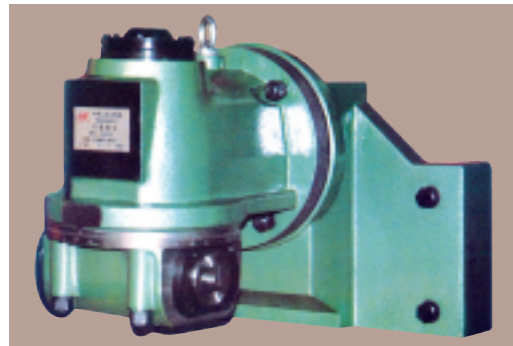


1011-0001...0011,1011(XC) SERIES UNIVERSAL MILLING HEAD

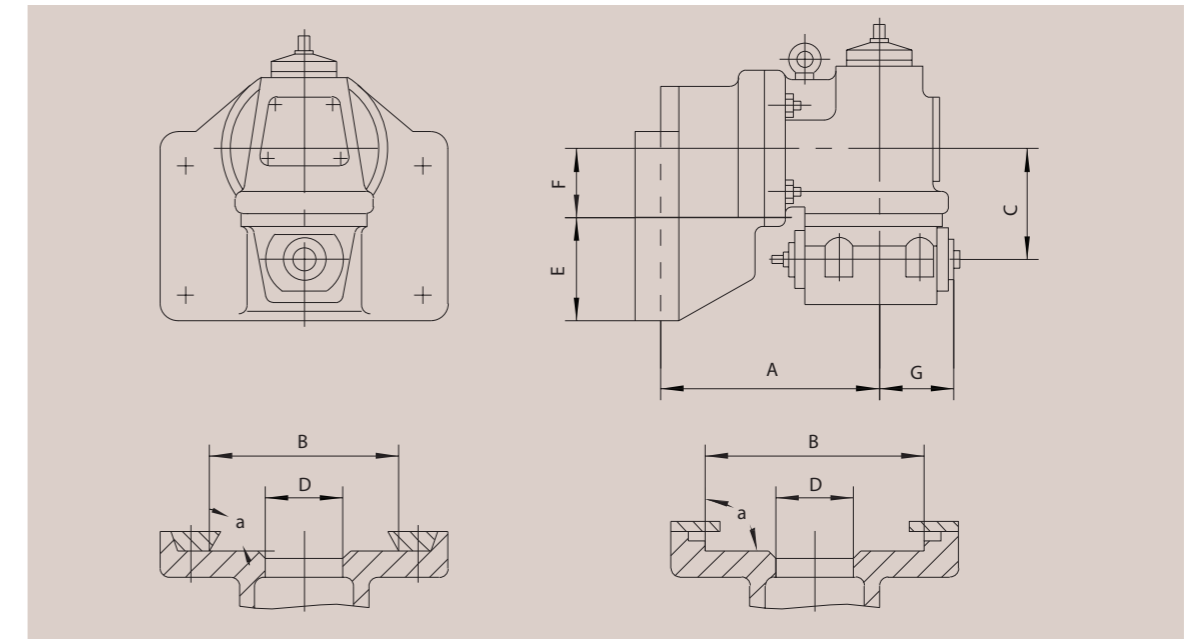


The spindle of the XC series universal milling head can be turned into two rotary planes vertically each other. It not only can finish the works of vertical milling, horizontal milling, but also complete many planes, edges and flutes on various angles by once mounted. It especially fits for the machining of single workpiece, small batches and servicing.

Main specifications

Items Model	Taper of spindle bore	Rotating angles	Matched type with milling machine	Name of milling machine maker	Ratio with milling machine	Taper with spindle of milling machine
1011-0001 (XC624A)	MT4	360°	X62 X62W X6132		1: 1	7:24(φ 69.85)
1011-0002 (XC624C)	MT4	360°	X6132A		1: 1	7:24(φ 69.85)
1011-0003 (XC634A)	MT4	360°	X63 X63WB, 400W		1: 1	7:24(φ 69.85)
1011-0004 (XC634C)	MT4	360°	X6040 X6140		1: 1	7:24(φ 69.85)
1011-0005 (XC63T4A)	MT4	360°	X63T X63WT		1: 1	7:24(φ 69.85)
1011-0006 (XC624A1)	MT4	360°	AL6036A		1: 1	7:24(φ 69.85)
1011-0007 (XC624A3)	MT4	360°	XN6132		1: 1	7:24(φ 44.45)
1011-0008 (XC624C3-40)	7:24(φ 44.45)	360°	X6125		1: 1	7:24(φ 44.45)
1011-0009 (XC624A-40)	7:24(φ 44.45)	360°	X62 X62W X6132		1: 1	7:24(φ 44.45)
1011-0010 (XC624C1-40)	7:24(φ 44.45)	360°	XW6032A		1: 1	7:24(φ 44.45)
1011-0011 (XC624C2-40)	7:24(φ 44.45)	360°	X6036		1: 1	7:24(φ 44.45)

1011-0001...0011,1011(XC) Installation sketch and dimensions



1011-0001...0011,1011(XC) Dimensional sketch

Items Model	A	B	c	D	E	F	G	a	GW kg	Case dimensions mm
1011-0001 (XC624A)	340	320	140	φ 165	133	112	110	55°	147	575X520X480
1011-0002 (XC624C)	340	340	140	φ 170	133	112	110	90°	150	575X530X480
1011-0003 (XC634A)	350	400	140	φ 165	133	112	110	55°	154	585X600X480
1011-0004 (XC634C)	350	400	140	φ 170	133	112	110	90°	162	595X605X480
1011-0005 (XC63T4A)	350	360	140	φ 210	133	112	110	50°	156	585X575X480
1011-0006 (XC624A1)	340	300	140	φ 190	133	112	110	55°	147	575X520X480
1011-0007 (XC624A3)	310	250	140	φ 150	110	112	110	55°	140	535X520X455
1011-0008 (XC624C3-40)	310	252	140	φ 128.88	110	112	120	90°	140	535X530X455
1011-0009 (XC624A-40)	340	320	140	φ 165	133	112	120	55°	147	575X520X480
1011-0010 (XC624C1-40)	340	300	140	φ 190	133	112	120	90°	145	575X530X480
1011-0011 (XC624C2-40)	340	320	140	φ 190	133	112	120	90°	145	575X530X480

HITECH (Qingdao)
ENTERPRISES INC